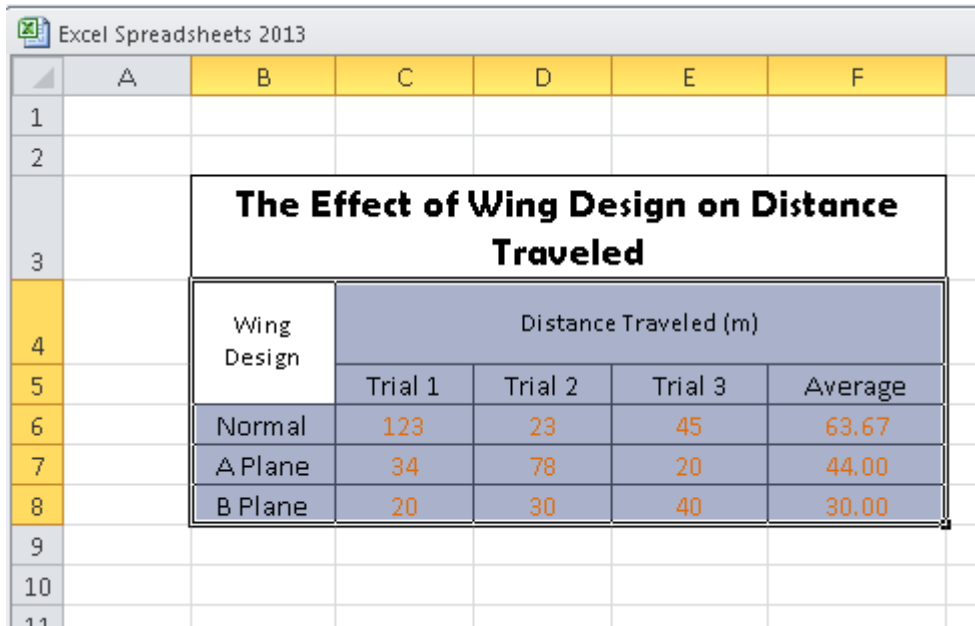


Creating a Graph in Excel

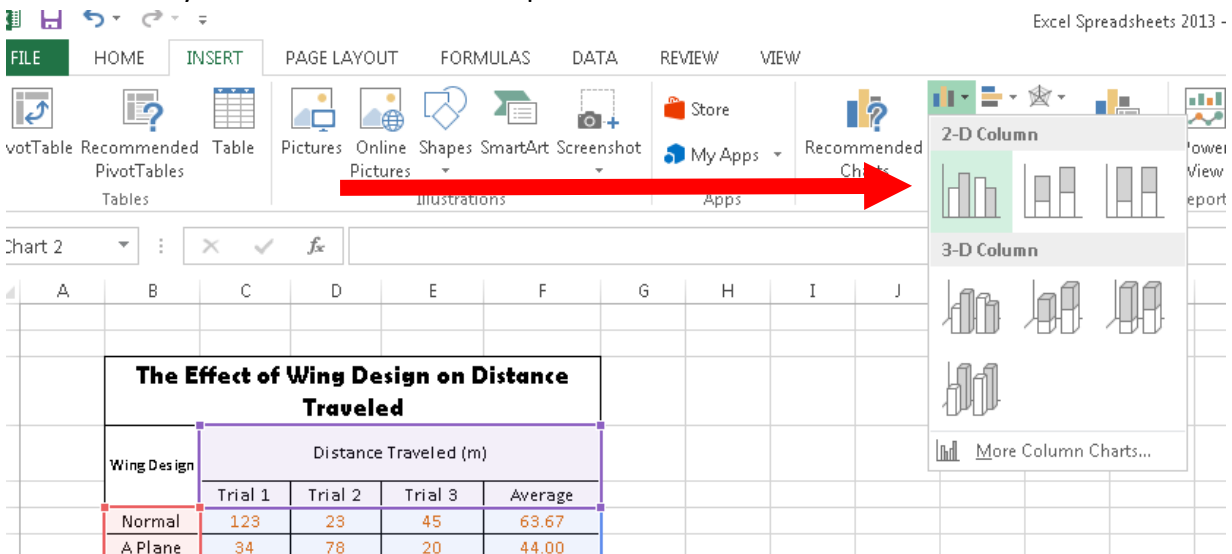
1. Click on B4 and highlight the graph (everything BUT the title)



The screenshot shows an Excel spreadsheet with a table titled "The Effect of Wing Design on Distance Traveled". The table is located in the range B4:F8. The columns are labeled "Wing Design", "Trial 1", "Trial 2", "Trial 3", and "Average". The rows represent different wing designs: "Normal", "A Plane", and "B Plane".

Wing Design	Distance Traveled (m)			
	Trial 1	Trial 2	Trial 3	Average
Normal	123	23	45	63.67
A Plane	34	78	20	44.00
B Plane	20	30	40	30.00

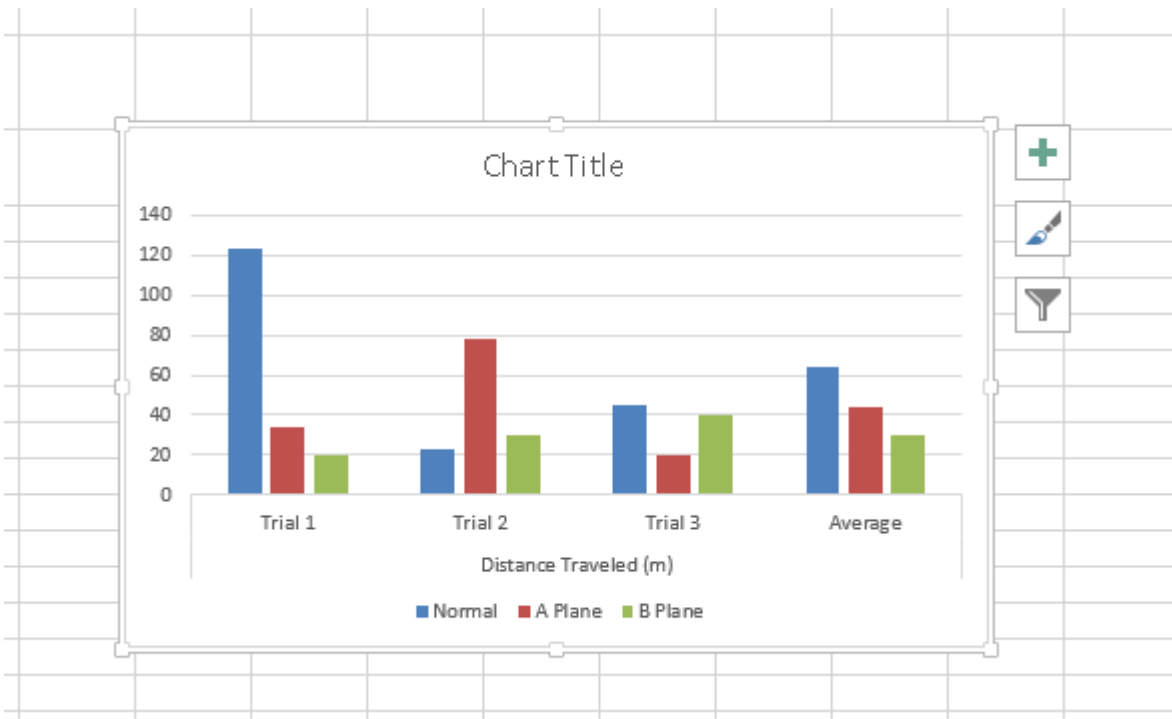
2. Click "Insert" at the top of the excel program and choose "the 2-D Columns." You are going to select the very first 2-D chart in that drop-down menu.



The screenshot shows the Excel 2013 ribbon with the "INSERT" tab selected. The "Recommended Charts" task pane is open, showing the "2-D Column" chart type selected. A red arrow points from the "Recommended Charts" button on the ribbon to the "2-D Column" chart type in the task pane.

The spreadsheet below the ribbon shows the same table as in the previous screenshot, with the "Normal" and "A Plane" rows highlighted in red.

3. This is what should appear (or something similar to it):



4. Right click on the BLANK section in your graph. A drop down menu will appear. Click on “Select Data”

5. A new box will appear, and the lines will start to dance around the data table. Click on “Switch Row/Column” and then “OK” (see below)

Wing Design	Distance Traveled (m)			
	Trial 1	Trial 2	Trial 3	Average
Normal	123	23	45	63.67
A Plane	34			
B Plane	20			

Select Data Source

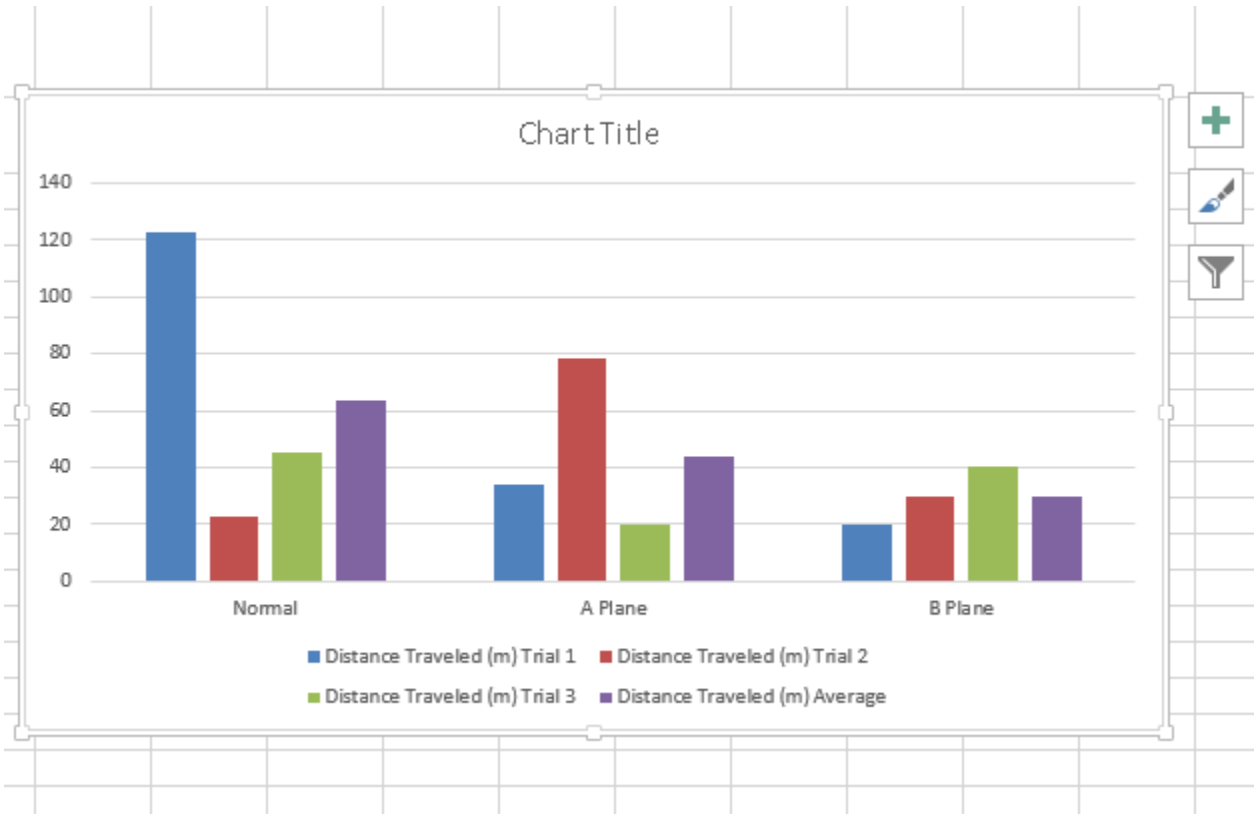
Chart data range: =Sheet5!\$B\$4:\$F\$8

Switch Row/Column

Legend Entries (Series)	Horizontal (Category) Axis Labels
<input checked="" type="checkbox"/> Normal	<input checked="" type="checkbox"/> Distance Traveled (m) Trial 1
<input checked="" type="checkbox"/> A Plane	<input checked="" type="checkbox"/> Distance Traveled (m) Trial 2
<input checked="" type="checkbox"/> B Plane	<input checked="" type="checkbox"/> Distance Traveled (m) Trial 3
	<input checked="" type="checkbox"/> Distance Traveled (m) Average

Hidden and Empty Cells

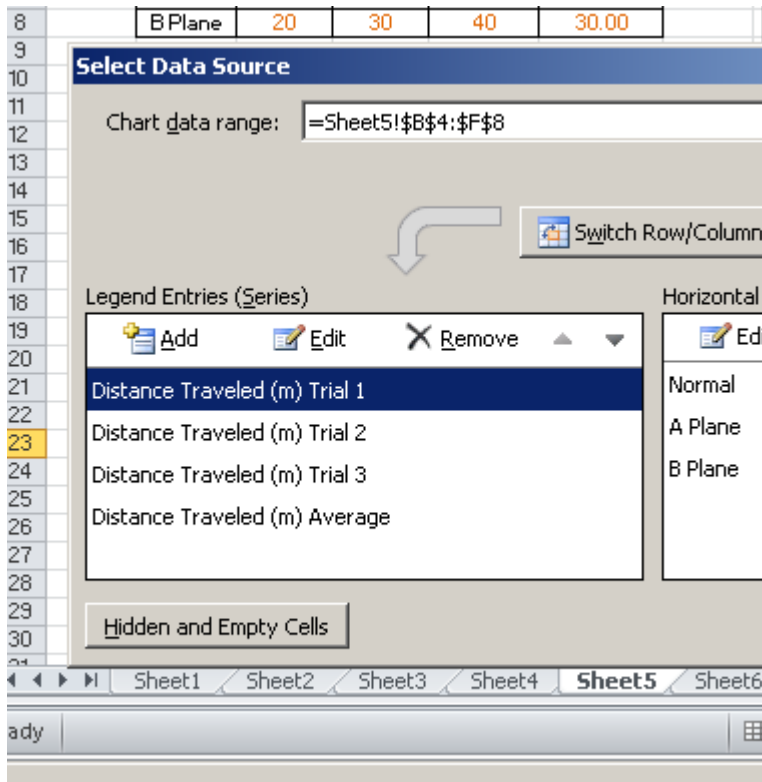
- Now, your independent variables are listed on the X axis of your graph, and the key is with each of the trials! However, the trials listed in the key have WAY too many words in them:



- We need to change that by RIGHT CLICKING in the blank spot in your chart
- Click on “select data” from the drop down menu. You should see the same box from earlier

Trial 1	Trial 2	Trial 3	Average
123	23	45	63.67
34			
20			

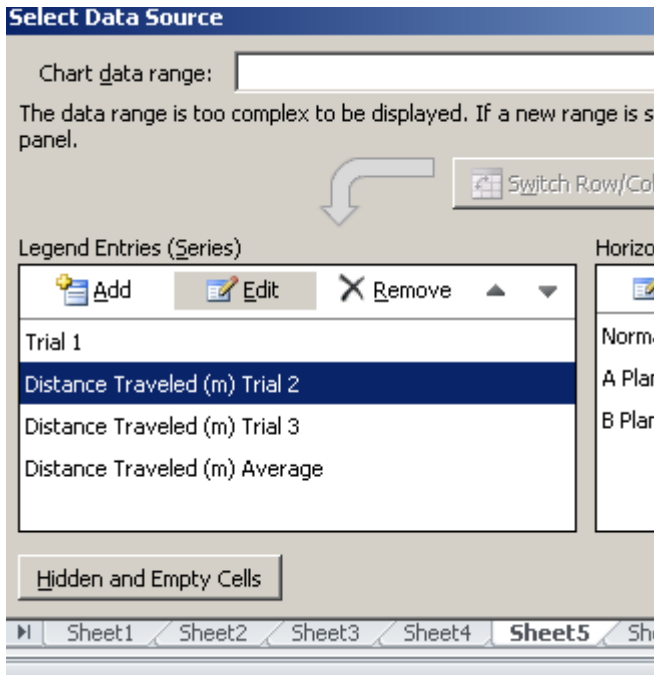
- You are going to look on the left side of your box where the trials are listed under Legend Entries. Click on the first line so that it turns blue:



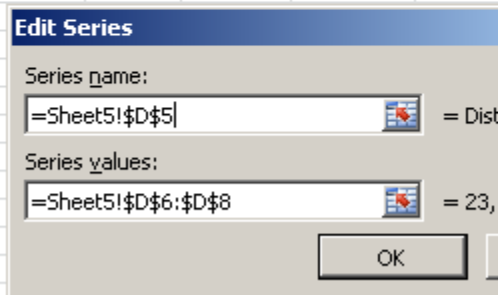
- Click on "EDIT" which is right above.
- Click on "TRIAL 1" in your table and then click ok

Wing Design	Distance Traveled (m)			
	Trial 1	Trial 2	Trial 3	Average
Normal	123	23	45	63.67
A Plane	34	78	20	44.00
B Plane	20	30	40	30.00

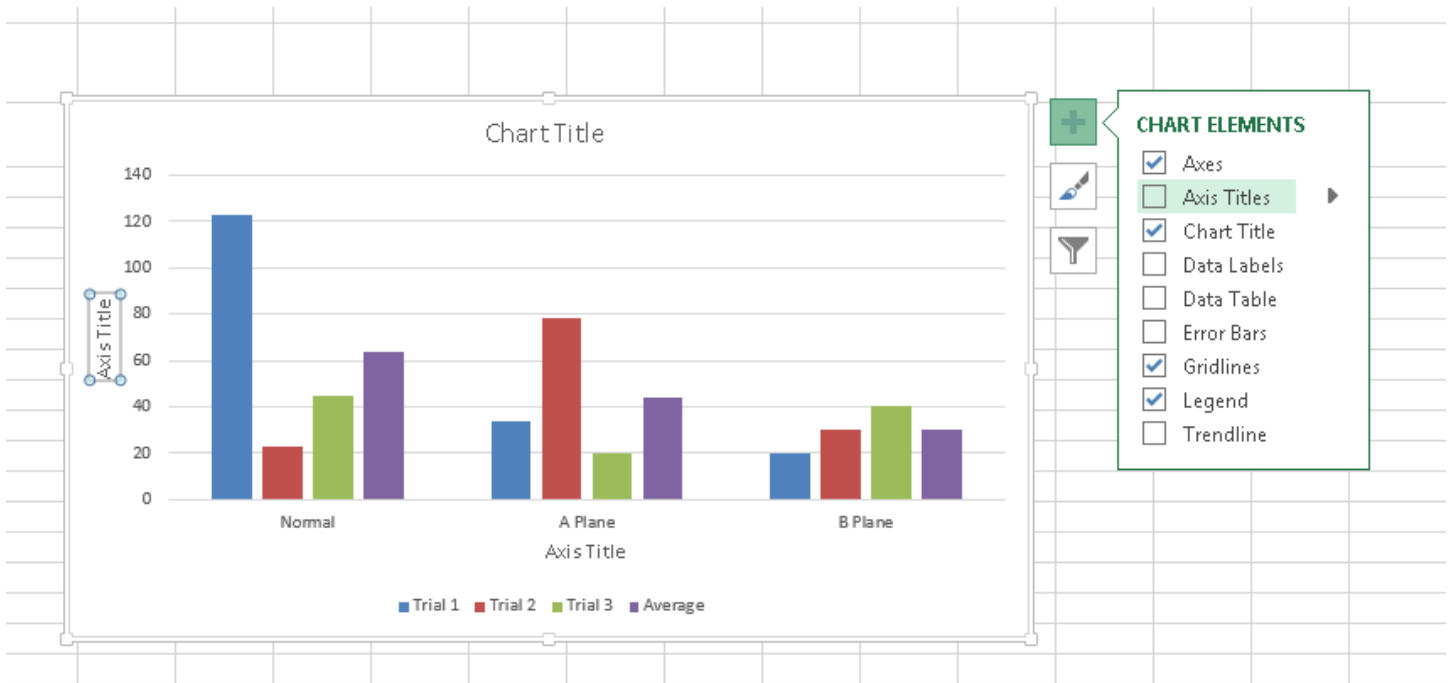
- The chart should re-appear. Click on the second one, then click on "Trial 2" in your table, then "OK".



Wing Design	Distance Traveled (m)			
	Trial 1	Trial 2	Trial 3	Average
Normal	123	23	45	63.67
A Plane	34	78	20	44.00
B Plane	20	30	40	30.00

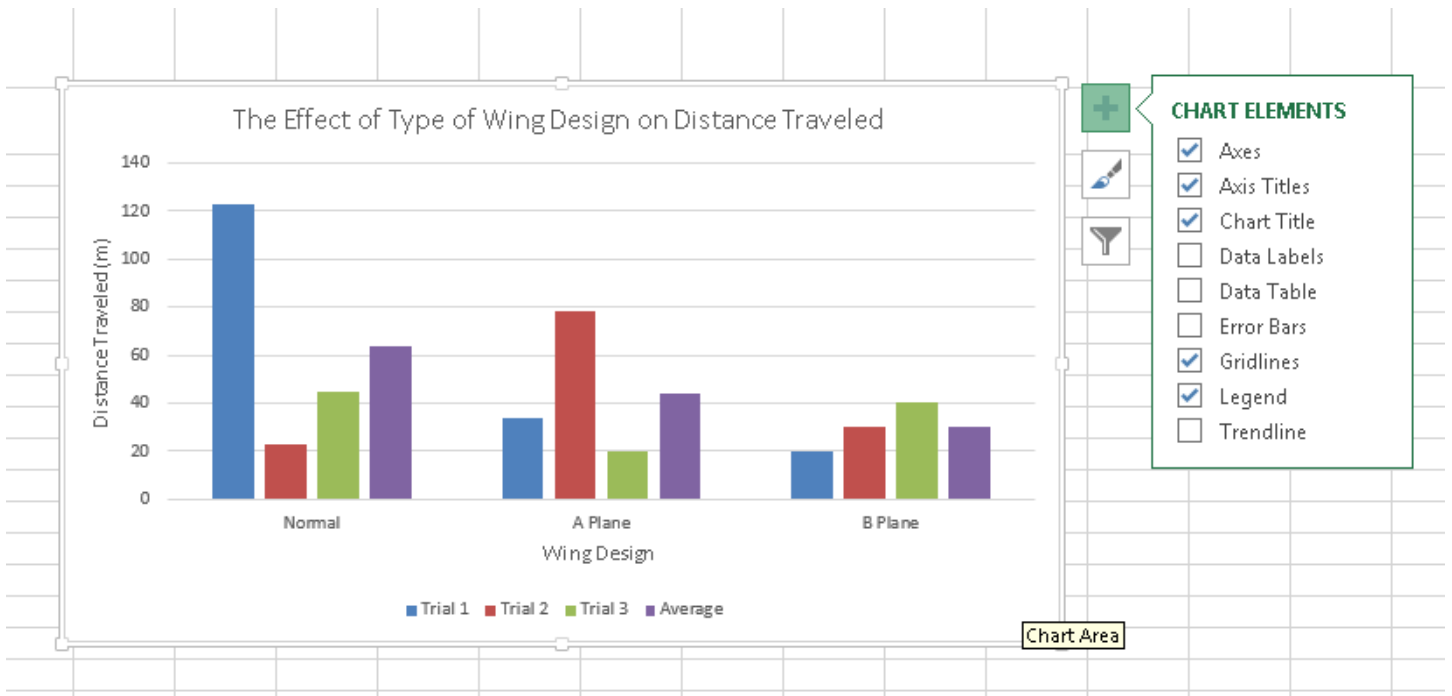


13. Continue until all of your Legend Entries now match each of your trials/averages. Don't forget to hit "OK" once you are finished.
14. Click on the plus sign/cross to the right of your graph.
15. Click on "Chart Title" and "Axis titles" to enter a title for your graph and label the axis.

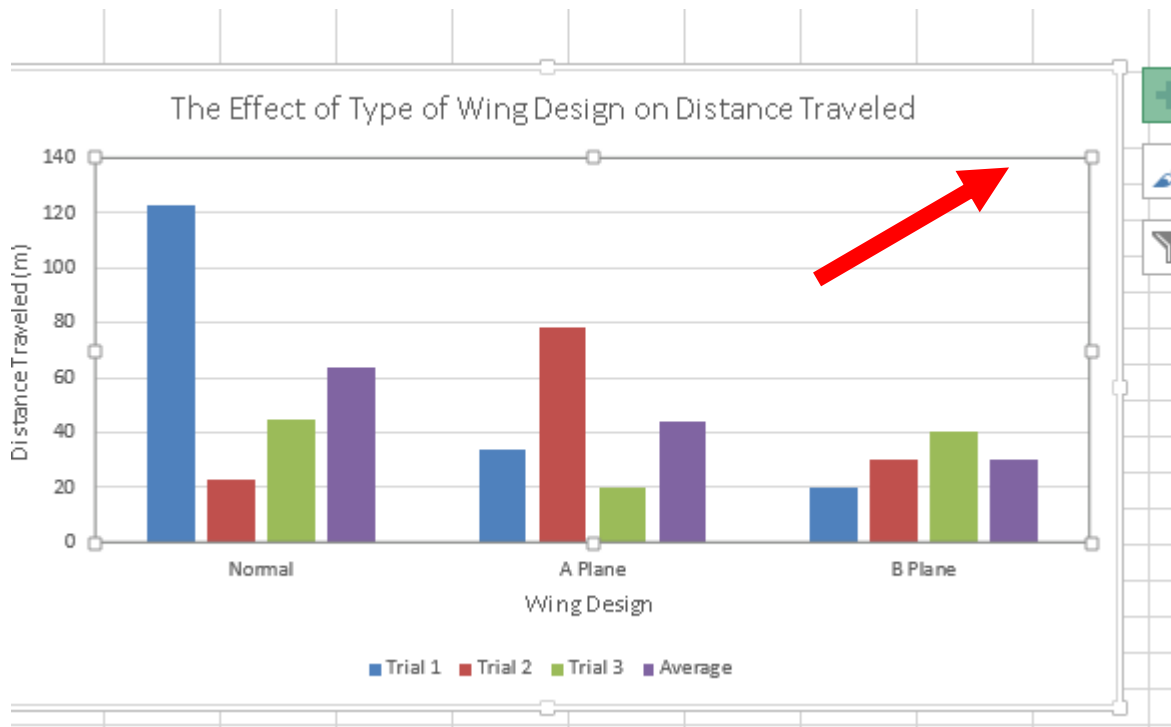


16. DO NOT forget to capitalize and include units!!!! 😊

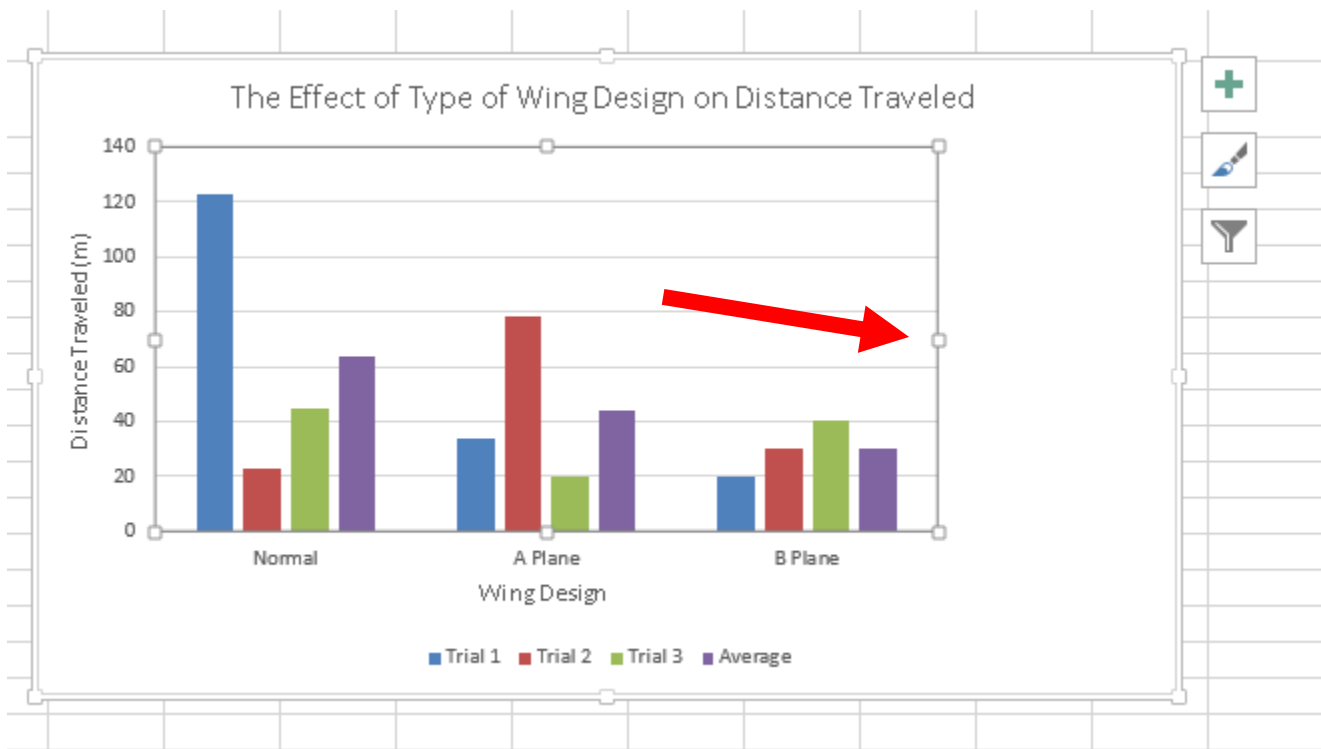
17. Your final graph should look similar to this:



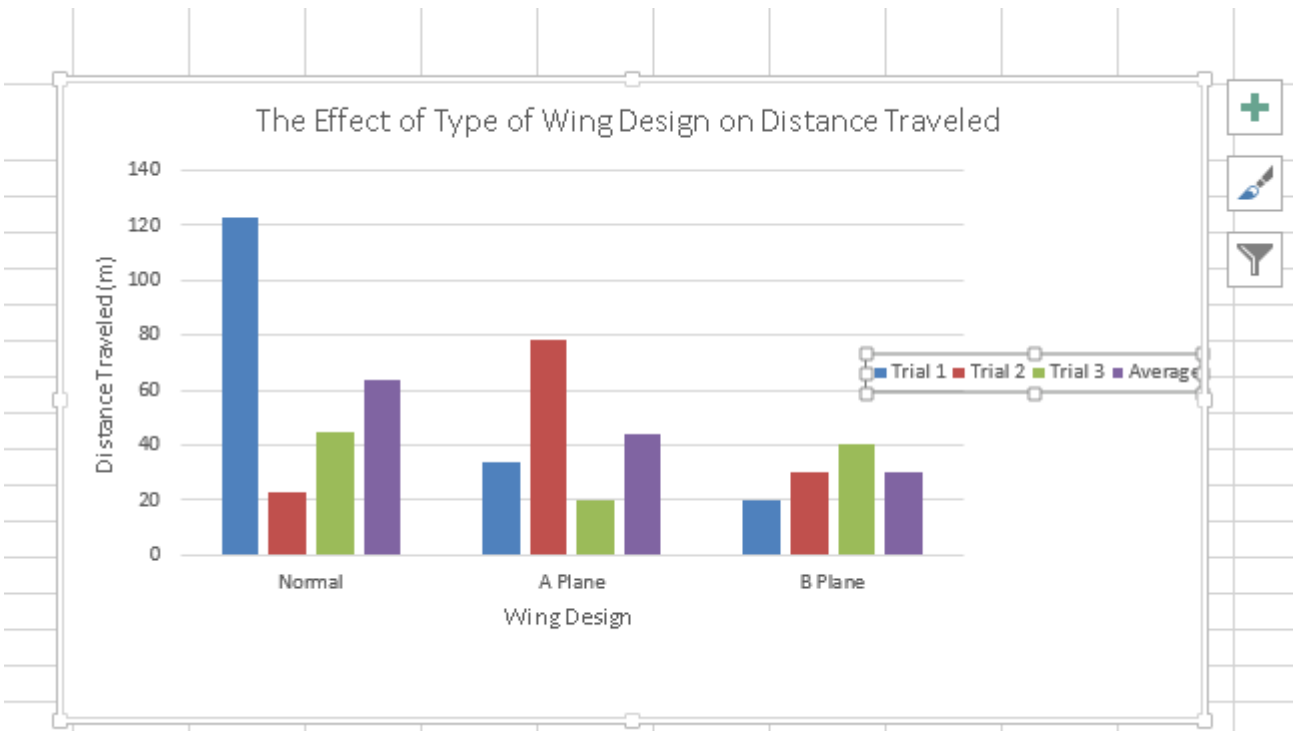
18. To move your key over to the right, click on a blank spot in your graph so that a box appears around the graph:



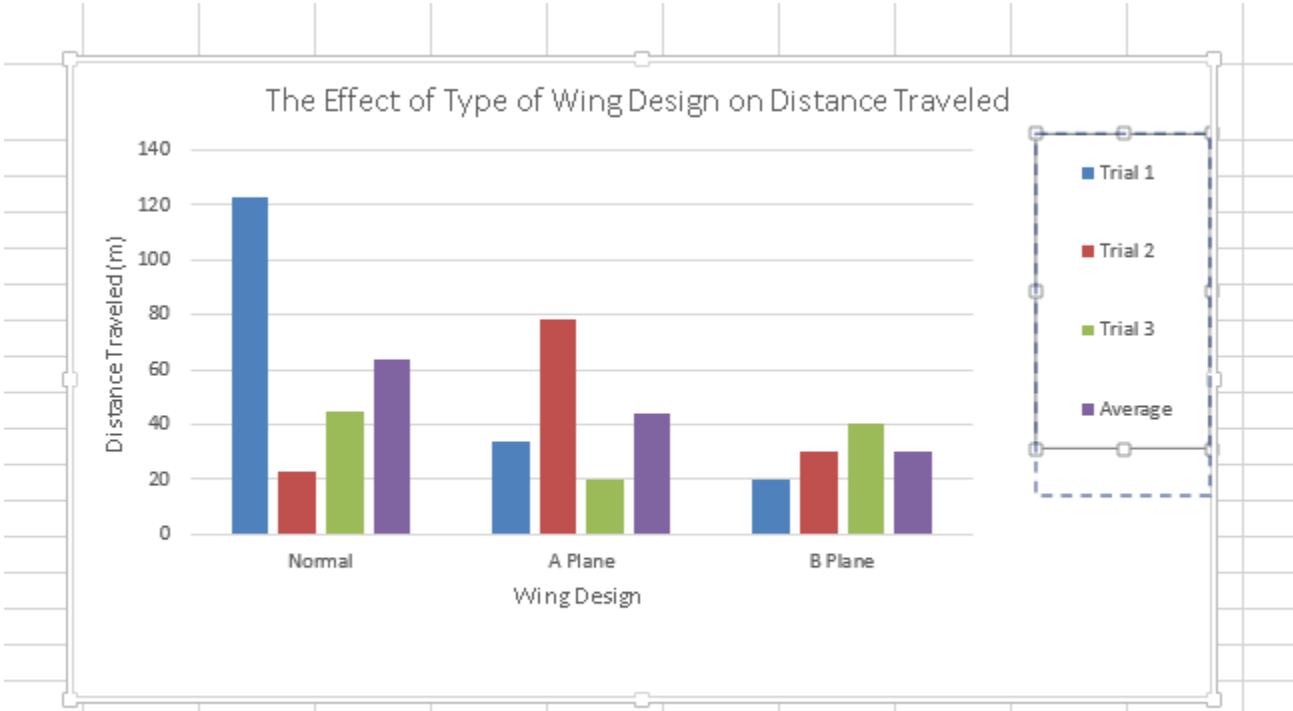
19. Shrink the box so that it is positioned more to the left and that there is space on the right:



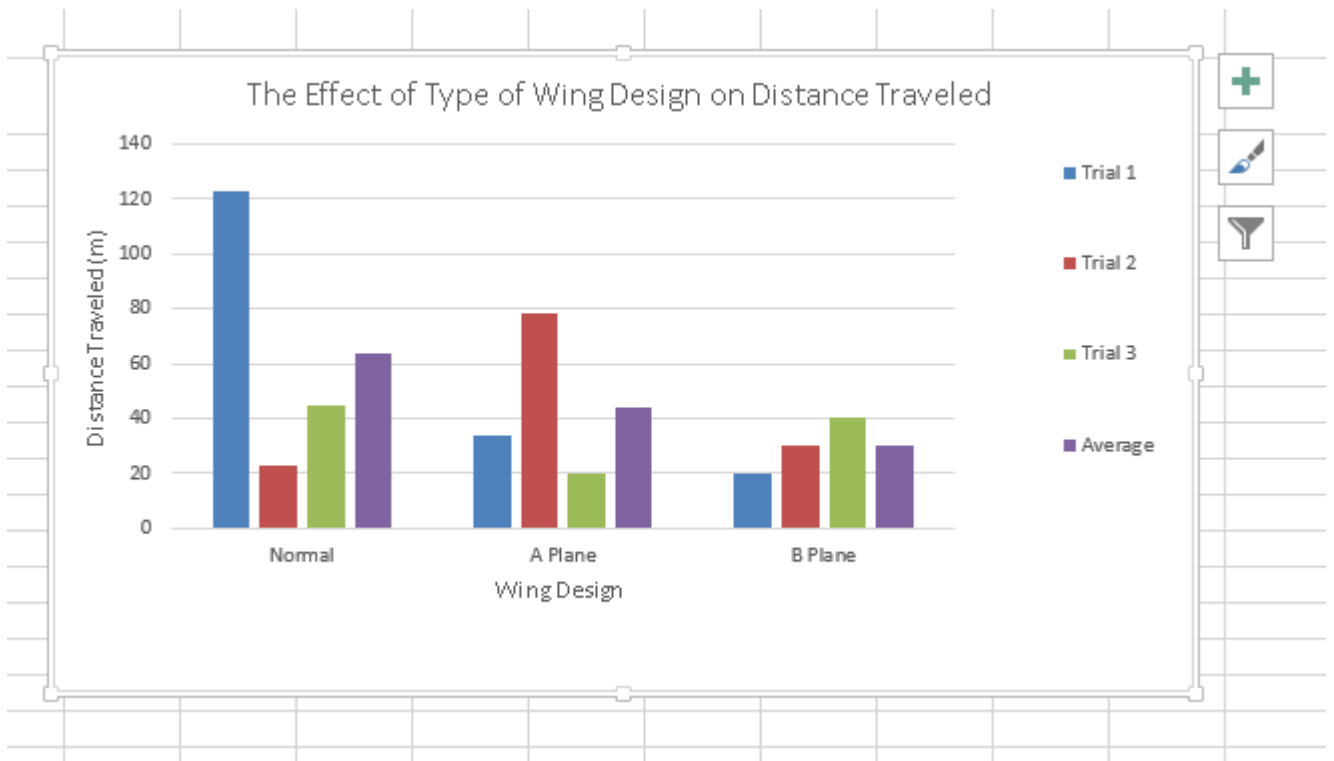
20. Drag the box of the keys to the right in that empty space on your graph:



21. Then play around with the shape of that key box until it is vertical:



22. Click on a blank space in the graph:



23. Right click on the blank space in your graph.
24. Copy
25. Paste in Microsoft Word.
26. In Word, you can edit the size, colors, etc.